

Precise

/ Magnetic Linear
Motor Control

Fast

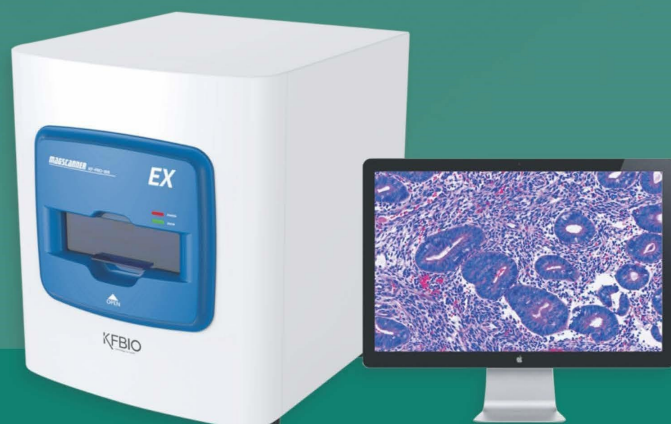
/ 40s Only From Focusing
To Image Completion

Accurate

/ Continuous Working
Without Problem

Excellent

/ Nucleus Structure
Clearly Presented

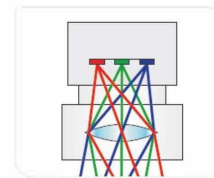


KF-PRO-005

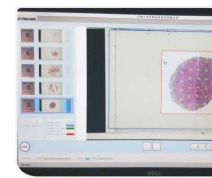
Digital Pathology Slide Scanner

For scanning and digitization of human tissue slices, compress, and store them for future retrieval and viewing of digital slides

Product Features



High-quality Line Scanning to Ensure
Image Quality Adequate for Diagnosis



Fast-speed Scanning
40s Only During the Operation



No Need to Watch Over
One Click Operation



On-line Image Browse For
Diagnosis and Report

Application Circumstances



Clinical • Information management
Diagnosis • AI-assisted diagnosis



Frozen Section • Fast scanning
Remote Diagnosis • Timely diagnosis



Training • Resources sharing
• Real-Time communication

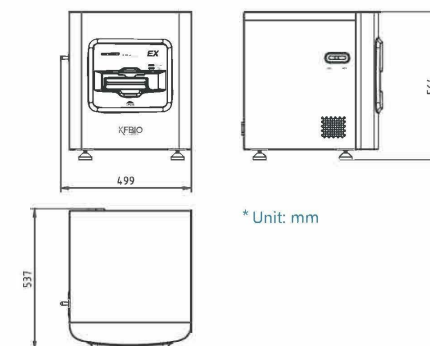


Telepathology • Quick transmission
Consultation • Real-time image viewing

Performance Index

Acceptable Slide Size	(1 inch-5 inch)×3 inch
Capacity	1-5 slides
Lighting	LED
Scanning Manner	line scanning
Objective Lens	OLYMPUS super apochromatic objective lens Numerical Aperture 0.8
Movement Control	magnetic linear motor control
Magnification	20 / 40
Resolution	0.25μm/pixel (20X) 0.125μm/pixel (40X)
Scanning Speed	≤25s (20x, 15mm × 15mm) ≤90s (40x, 15mm × 15mm)
Z-Stack Scan	yes
Focusing	automatic/manual
Precise Identification	yes
Label Identification	Bar code/QR
Image Format	KFB/TIF/DICOM
Work Station	CPU: Intel Core I5 Hard Disk: 1TB
Dimension (L*W*H)	Memory: 16G Monitor: 24 inch 499*537*564mm
Weight	54.6kg

Product Dimension



* Unit: mm

Contact Us

Tel/WhatsApp/Wechat: +86 186-7233-4799

Email: info@kfbio.cn

Web: kfbio.com

All the information in this material is for reference only, the company reserves all the rights, including updating and revision, sales representatives shall be consulted on issues of parameter updating.

