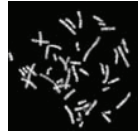




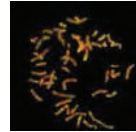
www.spectral-imaging.com



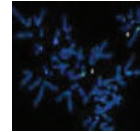
FDA ISO 13485 CMDCAS Medical Devices
ISO 13485 Medical Devices - ISO 9001



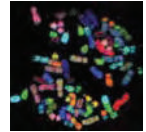
Q-Band



R-Band FL



FISH



Spectral

Applied Spectral Imaging

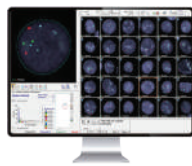
HiPath Pro is a unique Brightfield imaging and analysis system designed to meet a range of histopathology needs, including quantitative IHC scoring and whole slide imaging of H&E/IHC samples. With precise computer-assisted analysis and exceptional image quality, HiPath Pro ensures uncompromised result standardization and fosters collaboration.

ASI is a global leader in biomedical imaging with a comprehensive product portfolio for Karyotyping, H&E, IHC, and FISH analysis. The company's advanced technology provides pathology, cytogenetics, and research laboratories with end-to-end solutions, including slide scanning, high-resolution Whole Slide Imaging (WSI), quantitative analysis, reporting, and LIS connectivity.

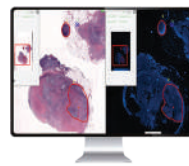
HiBand



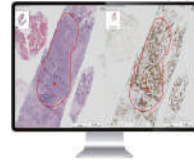
HiFISH



PathFusion



HiPath Pro



Authorized Sales Territories:

Turkey, Iraq, UAE, Qatar, Kuwait, Bahrain, Saudi Arabia, Oman, Armenia, Azerbaijan, Georgia, Turkmenistan, Tajikistan, Uzbekistan, Kazakhstan, Afghanistan, Egypt, Sudan



+98 (21) 910 100 11
+98 (21) 88 02 90 84
info@parsgene.com

www.parsgene.com
unit5,no4, 4th avenue,
North Kargar st, Tehran

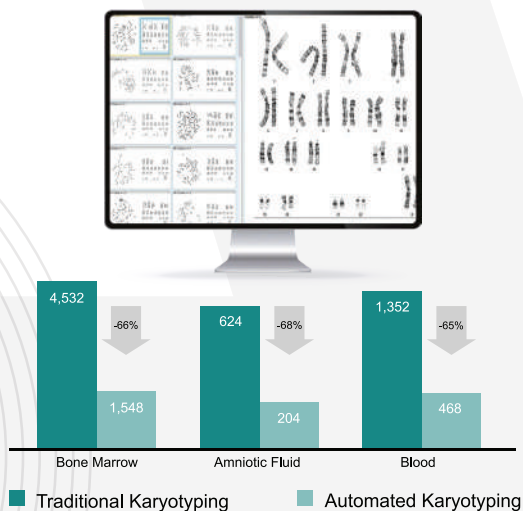


ASI APPLIED SPECTRAL IMAGING

Powered By AI

Fully automated workflow powered by AI

ASI's fully automated karyotyping workflow performs chromosome detection, segmentation and classification with minimal human interaction. Integrated into HiBand, the AI-powered karyotyping is applicable to all sample types, and can be used both with manual and scanning platforms. Karyotyped metaphases, presorted automatically according to their quality, are available for review and approval while scanning.

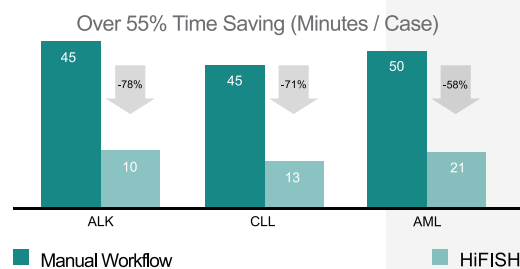


Benefits to your lab

- Automatic **Metaphase Finder** to identify best cells for analysis;
- Magic Tool** for easy chromosome separation & boundary editing;
- Image Gallery** displaying all metaphases & karyotypes;
- Chromosome Compare** to review cells & chromosomes side by side;
- Aberrant Ideogram** for detailed chromosome analysis;

HiFISH

HiFISH is a cutting-edge AI enhanced digital FISH scanning and analysis solution offering advanced computational tools and automated workflows. Vendor-agnostic, the system supports unlimited number of probes which are optimized based on users' needs. Combining 3D cell review with robust image quality through AI powered adaptive image optimization, HiFISH provides standardized results based on automatic signal detection and cell classification. Flexible analysis workflows for single or multiple readers, associated with automated quantitative FISH analysis, offer high versatility to address most laboratory needs.



Benefits to your lab

- AI Powered** FISH scanning uniquely optimized per hybridization;
- Unlimited number of **vendor-agnostic** probes;
- High quality image with **digital 3D review** of each cell;
- Cell gallery for **fast classification** & review;
- Real time **computer-aided analysis**;
- Automatic detection of **abnormal patterns**;
- Option for multi-reader **double blinded review**;
- Simultaneous interphase & metaphase capture for **quality assurance**;

+98 (21) 910 100 11
+98 (21) 88 02 90 84
info@parsgene.com

www.parsgene.com
unit5,no4, 4th avenue,
North Kargar st, Tehran

